



Manage this device with
 Digi Remote Manager

DIGI IX10

Rugged, reliable, cost-effective connectivity for critical industrial applications

Digi IX10 is a full-featured cellular router built for trouble-free reliability over a long service life. Its flexible power and connectivity options make it a versatile and cost-effective choice for industrial, digital signage, ATMs, lottery terminals, kiosks and other unattended retail applications that need to provide secure transactions.

Digi IX10 features an RJ-45 serial port supporting both RS-232 and RS-485, as well as dual SIMs for redundant connection. It can operate independently on LTE networks, with features to assist in network control and management, such as VLAN support, load balancing between cellular and Ethernet WANs, dual APNs and configurable APN search. Digi IX10 also offers low-touch and no-touch provisioning.

Gain critical insights into your deployed devices and manage your network with Digi Remote Manager® (Digi RM) — the command center for your deployment. Digi RM is a cloud-based solution that facilitates easy setup, mass configuration, maintenance and support, even for thousands of devices. Digi RM empowers you to evaluate, update and configure your Digi enterprise products, while providing easy visibility into the health of your network.

In the event of an interruption to your primary network connection, Digi RM also provides secure terminal access for out-of-band management access to edge devices via Digi IX10 via serial port and command-line interface. In addition, Digi IX10 offers the convenience of a global SKU which simplifies inventory control for global distribution and deployment.

FEATURES AND BENEFITS

- Compact and economical cellular routing platform with industrial feature set
- Redundant connectivity with dual SIMs and Digi SureLink®
- Global bands and single part number to simplify global distribution, deployment and management
- Built-in Digi TrustFence® for device security, device identity and data privacy
- Digi Remote Manager platform for easy setup, mass configuration and out-of-band management
- Ethernet port and single RJ-45 serial port (RS-232/485)

RELATED PRODUCTS



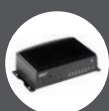
Digi IX14



Digi IX20



Digi WR31

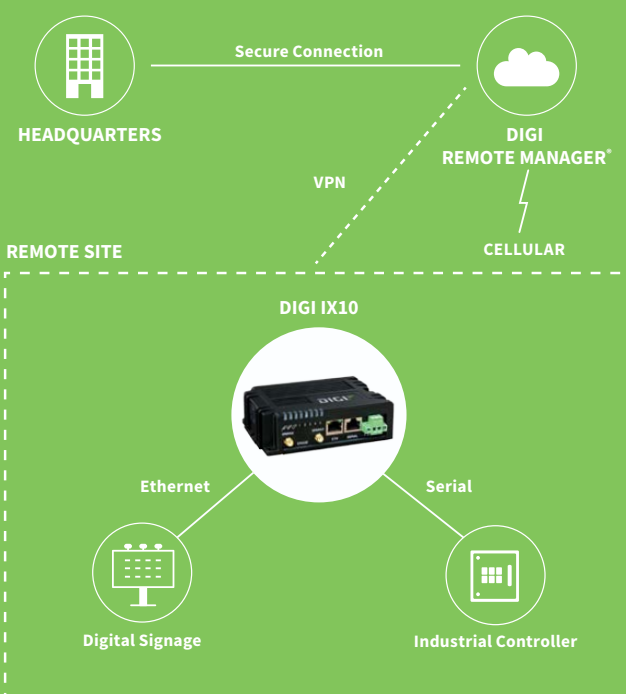


Digi TX54



Digi Remote Manager

APPLICATION EXAMPLE

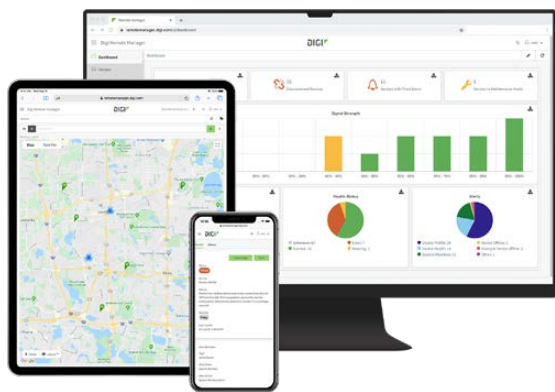


SPECIFICATIONS		DIGI® IX10	
CELLULAR			
CERTIFICATIONS		Visit www.digi.com/resources/certifications for latest certifications	
LTE (G4)		LTE Cat 4: B1, B2, B3, B4, B5, B7, B8, B12, B13, B18, B19, B20, B25, B26, B28, B38, B39, B40, B41 3G: B1, B2, B4, B5, B6, B8, B19 2G EDGE / GPRS: 850 / 900 / 1800 / 1900 MHz	
CONNECTORS		(2) 50 Ω SMA (center pin: female)	
SIM SLOTS		(2) Mini-SIM (2FF)	
SIM SECURITY		Behind SIM cover, secured with screw (#1 Phillips)	
SOFTWARE AND MANAGEMENT			
REMOTE MANAGEMENT		Digi Remote Manager®; SNMP v2/v3 (user installed/managed)	
LOCAL MANAGEMENT		WebUI (HTTP/HTTPS); CLI (Telnet, SSH)	
MANAGEMENT/ TROUBLESHOOTING TOOLS		FTP client, SCP; protocol analyzer with PCAP for Wireshark; event logging with syslog and SMTP client; NTP/SNTP; Nagios, Intelliflow, iPerf, Dynamic DNS, ping, traceroute	
ETHERNET			
PORTS		(1) RJ-45; 10/100 Mbps (auto-sensing)	
SERIAL			
PORTS		(1) RJ-45 10-pin (10P10C); RS-232/485; software selectable - RS-232 DTE (RXD, TXD, RTS, CTS, DTR, DCD, DSR, RI) - RS-485 (TX/RX+; RX/TX-); half-duplex	
PHYSICAL			
DIMENSIONS (L x W x H)		118 mm x 88 mm x 35 mm (4.65 in x 3.46 in x 1.38 in)	
WEIGHT		0.39 kg (0.86 lb)	
STATUS LEDs		Power, Internet, SIM 1, SIM 2, SIM fail, LTE, signal strength (5)	
ENCLOSURE		Glass-filled polyphenylene sulphide (PPS) / IP30	
POWER REQUIREMENTS			
POWER INPUT		9 - 30 VDC, 1.0 A maximum	
POWER CONSUMPTION		2.5 W typical (idle); 6 W typical (peak Tx/Rx)	
ENVIRONMENTAL			
OPERATING TEMPERATURE		-40° C to 70° C (-40° F to 158° F); device performance may be impacted above 50° C (122° F)	
RELATIVE HUMIDITY		5% to 95% (non-condensing)	
APPROVALS			
CELLULAR		Visit www.digi.com/resources/certifications for latest cellular certifications	
SAFETY		IEC62368-1, CB, EN62311	
ENVIRONMENTAL		ROHS3	
EMISSIONS / IMMUNITY		CE; RED; FCC Part 15, Subpart B; ICES-003; AU/NZS CISPR32	
WARRANTY			
PRODUCT WARRANTY		3-year*	

*Standard 3-year warranty upgradeable to 5 years with purchase of a Digi Remote Manager Premier 5-year subscription applicable to the product purchased only at the time of product purchase and with product registration at that time in Digi Remote Manager.

ENTERPRISE SOFTWARE	DESCRIPTION
CELLULAR CONNECTIVITY	
PROTOCOL SUPPORT	HTTPS, FTP client, SSL, TLS v1.2, SCP (client and server), SFTP, SMTP client for use by scripts and the command line, SNMP (v2/v3), SSH; remote management via Digi Remote Manager®; protocol analyzer, ability to capture PCAP for use with Wireshark; DynDNS; dynamic DNS client compatible with BIND9/No-IP/DynDNS; captive portal, Intelliflow; Nagios, DNS server, NTP server, multicast, mDNS, IPerf
SECURITY	IP filtering, stateful firewall, custom firewall rules (iptables), address and port translation; TLS 1.2 and above, OpenVPN client and server; VPN tunnels; Authentication: RADIUS, TACACS+; certificates; MAC address filtering; VLAN support
VPN	IPSec with IKEv1, IKEv2, NAT Traversal; OpenVPN client and server; GRE VPN tunnels; Cryptology: SHA-1/256/384/512, MD5, RSA; Encryption: 3DES and AES up to 256-bit (CBC mode for IPsec); Diffie Hellman: DH groups 1-32 (CURVE448)
ROUTING / FAILOVER	IP pass-through; NAT, NAPT with IP port forwarding; GRE; multicast routing; Routing protocols: RIP (v1, v2) OSPF, BGP; IP failover: VRRP; automatic failover, Digi SureLink®
OTHER PROTOCOLS	DHCP; dynamic DNS client compatible with No-IP/DynDNS

DIGI REMOTE MANAGER®



Digi Remote Manager is the technology platform that brings networks to the next level, allowing networks — and the people who manage them — to work smarter. With Digi Remote Manager you can transform a multitude of dispersed IoT devices into a dynamic, intelligent network. Now you can easily deploy, monitor and diagnose thousands of mission-critical devices from a single point of command — on your desktop, tablet or phone. All the while, its software-defined security diligently safeguards your entire Digi ecosystem.

Learn more at www.digi.com/digi-remote-manager

CAPABILITIES

- Activate, monitor and diagnose your mission-critical devices from a single point of command and control — on your desktop or mobile app
- Schedule key operations — including firmware updates and file management — on a single device or on a group of devices, keeping your network functionality up-to-date and maintaining compliance standards
- Manage edge devices out-of-band via console terminal access
- Keep tabs on device health and connectivity across device deployments of any size
- Create detailed reports and enable real-time alerts for specified conditions
- Integrate device data through open APIs to gain deeper insights and control with third-party applications
- Report and alert on performance statistics, including connection history, signal quality, latency, data usage and packet loss

INFRASTRUCTURE

- Hosted in a commercial-grade cloud server environment that meets SOC 1®, SOC 2® and SOC 3® standards
- Superior availability, operating to 99.9% or greater
- Open APIs available to support application development

SECURITY

- More than 175 security controls in place to protect your data
- Member of the Center for Internet Security® (CIS®)
- Enables compliance with security frameworks like ISO27002, HIPAA, NIST and more
- Earned Skyhigh's CloudTrust™ Program highest rating of Enterprise-Ready

PRODUCT IMAGES

FRONT



BACK



PART NUMBERS

DIGI® IX10

IX10-00G4

Digi IX10 - LTE Cat 4 Global, (1) Ethernet, RS-232/485

PART NUMBERS

ACCESSORIES

76002104

Power supply with plug tips for US, UK, EU, AU

76002103

(1) Cellular antenna (order quantity 2)

76002095

DIN rail clip kit

76000723

Connect EIA 422/485 devices to Digi products that have 10-pin RJ-45 connectors*

*For RS-232 cabling pinouts and recommended cables, please refer to the Digi products cabling guide at: www.digi.com/resources/documentation/Digidocs/PDFs/90000253.pdf

PART NUMBERS

DIGI REMOTE MANAGER®

DIGI-RM-STD-1YR

Digi Remote Manager Standard - 1-year subscription

DIGI-RM-PRM-1YR

Digi Remote Manager Premier - 1-year subscription

DIGI-RM-PRM-3YR

Digi Remote Manager Premier - 3-year subscription

DIGI-RM-PRM-5YR

Digi Remote Manager Premier - 5-year subscription

FOR MORE INFORMATION
PLEASE VISIT 5Gstore.com

DIGI SERVICE AND SUPPORT / You can purchase with confidence knowing that Digi is always available to serve you with expert technical support and our industry leading warranty. For detailed information visit www.digi.com/support.

© 1996-2020 Digi International Inc. All rights reserved.
All trademarks are the property of their respective owners.

5Gstore.com | 833-5GSTORE | sales@5Gstore.com

91004436
A7/1120

5GSTORE
HELPING YOU STAY CONNECTED

DIGI