



Manage this device with
Digi Remote Manager



DIGI EX15

Branch connectivity in a compact, affordable, all-in-one solution

Digi EX15 offers gigabit Ethernet and Wi-Fi connectivity for retailers and other organizations that cannot tolerate network downtime and the negative impact on revenue streams and brand reputation.

A suite of upgradeable Digi CORE® plug-in LTE modems lets users select the cellular speeds that best fit their business requirements, including LTE Cat 4, LTE-Advanced Cat 7 and Cat 11, and LTE-Advanced Pro Cat 18 with FirstNet Ready™ models for critical primary responder communications.

Combine a Digi EX15 with a dedicated wireline connection to ensure dual ISP connectivity, maximum uptime and complete business continuity for devices that must be “always on,” such as mobile kiosks, digital signs and POS systems.

You can use Digi EX15 for primary LTE connectivity, in addition to dual-connectivity/failover. Additionally, the serial port can provide out-of-band (OOB) management for remote, off-premise equipment.

Reduce the complexity of deploying and managing devices with Digi Remote Manager®, the command center of an intelligent network. Digi Remote Manager provides centralized control, management, security, edge intelligence and day-to-day network management for hundreds and thousands of distributed devices.

For fast and easy installations, a site survey battery, PoE injector and mounting accessories are included for proper placement based on optimal signal strength.

FEATURES AND BENEFITS

- LTE-certified Digi CORE® plug-in modem
- Scalable cellular technology allows you to match speeds to applications and future proof your network
- Optimized connectivity to any Ethernet device
- Battery pack for site survey to identify optimal signal strength placement
- Multiple mounting options and accessories
- Serial port for remote, out-of-band management
- Securely deploy, monitor and control devices with Digi Remote Manager®
- Zero-touch provisioning and cloud management

RELATED PRODUCTS



Digi Remote Manager®



Digi CORE® plug-in LTE modem



Digi EX50

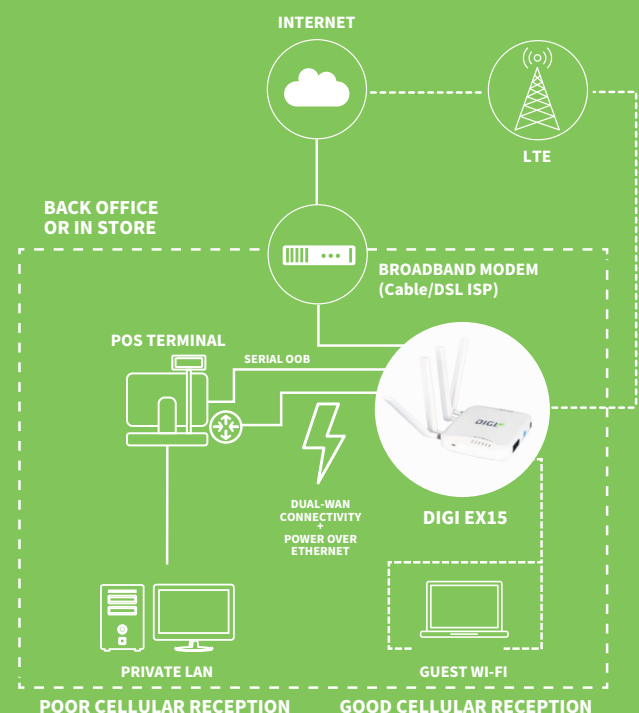


Digi EX12



Digi IX20

APPLICATION EXAMPLE

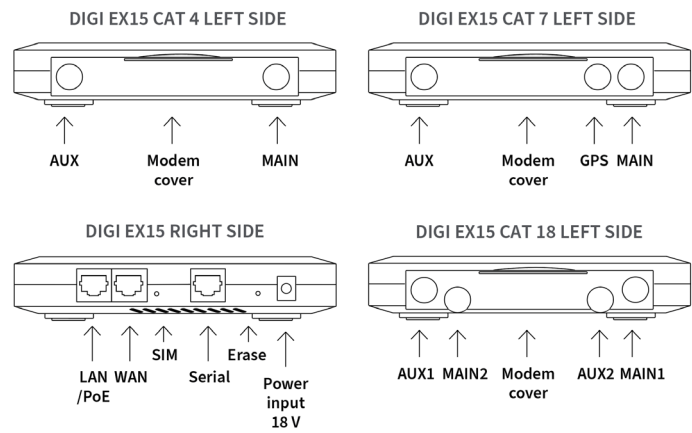
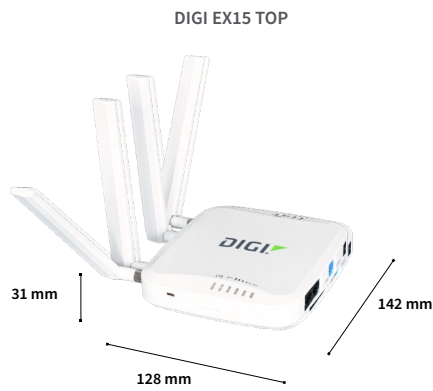


SPECIFICATIONS		DIGI EX15
CELLULAR CONNECTIVITY		
DIGI CORE® PLUG-IN LTE MODEMS	LTE Cat 4 (Global): B1, B2, B3, B4, B5, B7, B8, B12, B13, B18, B19, B20, B25, B26, B28, B39, B40, B41; 3G: B1, B2, B4, B5, B6, B8, B19; 2G EDGE / GPRS: 850 / 900 / 1800 / 1900 MHz; Transfer rate (max): 150 Mbps, 50 Mbps up	
	LTE-A Cat 7 (US): B2, B4, B5, B7, B12, B13, B25, B26, B41, B42, B43, B48, B66, B71; WCDMA: B2, B5; Transfer rate (max): 300 Mbps, 150 Mbps up	
CONNECTORS	(2) 50 Ω SMA (center pin: female)	
SIM SLOTS	(2) Mini-SIM (2FF); software selectable and hardware switchable	
SOFTWARE AND MANAGEMENT		
REMOTE MANAGEMENT	Digi Remote Manager®; SNMP v3 (user installed/managed), encrypted SMS	
LOCAL MANAGEMENT	WebUI (HTTP/HTTPS); CLI (SSH, serial port)	
PROTOCOLS	RIP, RIPng, OSPFv2, OSPFv3, BGP, Babel, IS-IS	
MANAGEMENT / TROUBLESHOOTING TOOLS	FTP client, SCP; protocol analyzer with PCAP for Wireshark; event logging with syslog and SMTP client; NTP/SNTP	
MEMORY	256 MB RAM, 512 MB flash	
ETHERNET		
PORTS	(2) RJ-45; 10/100/1000 Mbps (auto-sensing)	
WI-FI (OPTIONAL)		
CONNECTIVITY	2 x 2 MIMO 2.4/5 GHz: 802.11 b/g/n 2.4 GHz; 802.11 n/a/ac 5 GHz	
SERIAL		
PORTS	(1) RS-232 (RJ-45)	
PHYSICAL		
DIMENSIONS (L x W x H)	142 mm x 128 mm x 31 mm (5.6 in x 5.0 in x 1.2 in)	
WEIGHT	0.2 kg (7.0 oz)	
STATUS LEDs	LAN (link = solid, flashing = act), WAN (link = solid, flashing = act), LTE, 5 signal, SIM 1 and 2 LEDs	
ENCLOSURE	Plastic	
POWER REQUIREMENTS		
POWER INPUT	18 VDC 1 A	
INCLUDED ACCESSORIES	Includes PSU, antennas, and remote mounting kit: temporary battery, passive PoE injector, mounting bracket and accessories	
ENVIRONMENTAL		
OPERATING TEMPERATURE	0° C to 40° C (32° F to 104° F)	
RELATIVE HUMIDITY	5% to 95% (non-condensing)	
APPROVALS		
CELLULAR	PTCRB; US: AT&T, FirstNet Ready™, T-Mobile, Verizon; Canada; Europe	
EMISSIONS / IMMUNITY	FCC Part 15, Subpart B, Class A; CE, RCM; CAN ICES-3(B)/NMB-3(B)	
WARRANTY		
PRODUCT WARRANTY	3-year**	

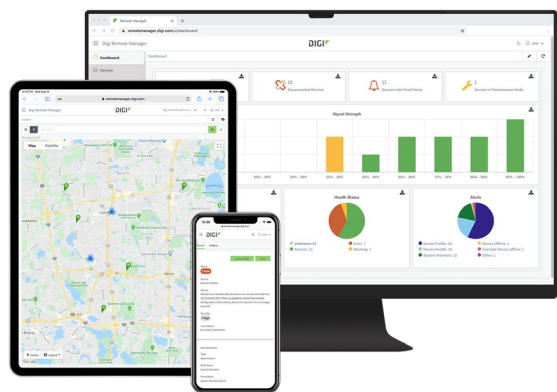
*Alternate antenna needed to support this particular band. Refer to Digi accessory 76002114 or 76002115.

**Standard 3-year warranty upgradeable to 5 years with purchase of a Digi Remote Manager Premier 5-year subscription applicable to the product purchased only at the time of product purchase and with product registration at that time in Digi Remote Manager.

PRODUCT IMAGES



DIGI REMOTE MANAGER®



Digi Remote Manager is the technology platform that brings networks to the next level, allowing networks — and the people who manage them — to work smarter. With Digi Remote Manager you can transform a multitude of dispersed IoT devices into a dynamic, intelligent network. Now you can easily deploy, monitor and diagnose thousands of mission-critical devices from a single point of command — on your desktop, tablet or phone. All the while, its software-defined security diligently safeguards your entire Digi ecosystem.

Learn more at www.digi.com/digi-remote-manager

CAPABILITIES

- Activate, monitor and diagnose your mission-critical devices from a single point of command and control
- Schedule key operations — including firmware updates and file management — on a single device or on a group of devices, keeping your network functionality up-to-date and maintaining compliance standards
- Manage edge devices out-of-band via console terminal access
- Keep tabs on device health and connectivity across device deployments of any size
- Create detailed reports and enable real-time alerts for specified conditions
- Integrate device data through open APIs to gain deeper insights and control with third-party applications
- Report and alert on performance statistics, including connection history, signal quality, latency, data usage and packet loss

INFRASTRUCTURE

- Hosted in a commercial-grade cloud server environment that meets SOC 1®, SOC 2® and SOC 3® standards
- Superior availability, operating to 99.9% or greater
- Open APIs available to support application development

SECURITY

- Comprehensive security controls in place to protect your data
- Member of the Center for Internet Security® (CIS®)
- Enables compliance with security frameworks like ISO27002, HIPAA, NIST and more
- Earned Skyhigh's CloudTrust™ Program highest rating of Enterprise-Ready

PART NUMBERS	DIGI REMOTE MANAGER®
DIGI-RM-PRM-1YR	Digi Remote Manager Premier — 1-year subscription
DIGI-RM-PRM-3YR	Digi Remote Manager Premier — 3-year subscription
DIGI-RM-PRM-5YR	Digi Remote Manager Premier — 5-year subscription*

*Standard 3-year hardware warranty upgradeable to 5 years with purchase of a Digi Remote Manager Premier 5-year subscription applicable to the product purchased only at the time of product purchase and with product registration at that time in Digi Remote Manager.

PART NUMBERS	DIGI EX15
ASB-EX15-WXG4-GLB	Digi EX15 — 2-port GigE; RJ-45, RS-232, Wi-Fi; LTE / HSPA+ Cat 4; Cellular certifications: PTCRB, AT&T, Verizon, Telus, US, Canada, Europe
ASB-EX15-XXG4-GLB	Digi EX15 — 2-port GigE; RJ-45, RS-232; LTE / HSPA+ Cat 4; Cellular certifications: PTCRB, AT&T, Verizon, Telus, US, Canada, Europe
ASB-EX15-WX07-OUS	Digi EX15 — 2-port GigE; RJ-45, RS-232, Wi-Fi; LTE-A / HSPA+ Cat 7; Cellular certifications: PTCRB, AT&T, T-Mobile, Verizon, US, Canada
ASB-EX15-XX07-OUS	Digi EX15 — 2-port GigE; RJ-45, RS-232; LTE-A / HSPA+ Cat 7; Cellular certifications: PTCRB, AT&T, T-Mobile, Verizon, US, Canada
ASB-EX15-WX11-GLB	Digi EX15 — 2-port GigE; RJ-45, RS-232; Wi-Fi; LTE-A / HSPA+ Cat 11; Cellular certifications: PTCRB, RED, AT&T, Verizon, Canada, Europe
ASB-EX15-XX11-GLB	Digi EX15 — 2-port GigE; RJ-45, RS-232; LTE-A / HSPA+ Cat 11; Cellular certifications: PTCRB, RED, AT&T, Verizon, Canada, Europe

PART NUMBERS	DIGI CORE® PLUG-IN LTE MODEMS
1002-CMG4-GLB	Digi CORE plug-in LTE modem — LTE / HSPA+ Cat 4; Cellular certifications: PTCRB, AT&T, Verizon, Telus, US, Canada, Europe
1003-CM07-OUS	Digi CORE plug-in LTE modem — LTE-A / HSPA+ Cat 7; Cellular certifications: PTCRB, AT&T, T-Mobile, Verizon, US, Canada
ASB-1003-CM11-GLB	Digi CORE plug-in LTE modem — LTE-A / HSPA+ Cat 11; Cellular certifications: PTCRB, RED, AT&T, Verizon, Canada, Europe

PART NUMBERS	ACCESSORIES**
450061	18 V PSU power supply with barrel jack connector (replacement)
500157	Cable assembly passive POE power injector, white 2.1 mm barrel connector (replacement)
560083	Temporary site survey battery pack, 9 V with 152.4 mm power lead, 2.1 mm barrel connector (replacement)
170011	(1) Antenna extender: 48 mm circle antenna magnetic base (base connector: SMA jack); cable: low loss CLF; 50 cm length with SMA plug (replacement for optional Wi-Fi enabled models)
170017	(2) Cellular antennas (replacement)
76002114	(1) Cellular antenna 600 MHz to 6 GHz, black
76002115	(1) Cellular antenna 600 MHz to 6 GHz, white

**Digi EX15 models supporting LTE Cat 4, LTE-Advanced Cat 7 and Cat 11 require two cellular antennas. Digi EX15 models supporting LTE-Advanced Pro Cat 18 require four cellular antennas, with optional alternate antennas 76002114 or 76002115 (white or black) available to support band B46.

DIGI SERVICE AND SUPPORT / You can purchase with confidence knowing that Digi is always available to serve you with expert technical support and our industry leading warranty. For detailed information visit www.digi.com/support.

© 2023 Digi International Inc. All rights reserved.
All trademarks are the property of their respective owners.

91004393
F3/1123

DIGI INTERNATIONAL WORLDWIDE HQ
877-912-3444 / 952-912-3444 / www.digi.com

DIGI INTERNATIONAL JAPAN
+81-3-5428-0261 / www.digi-intl.co.jp

DIGI INTERNATIONAL GERMANY
+49-89-540-428-0

DIGI INTERNATIONAL SINGAPORE
+65-6213-5380

DIGI INTERNATIONAL CHINA
+86-21-50492199 / www.digi.com.cn

