



Manage this device with
Digi Remote Manager



DIGI EX12

Avoid network outages with primary or backup LTE connectivity; integrate seamlessly with existing infrastructure

Digi EX12 is an affordable, scalable failover solution that enables you to retrofit your infrastructure for cellular network access. With a carrier-certified, embedded LTE Cat 4 cellular modem, equipped with dual SIM slots, Digi EX12 provides uninterrupted primary or backup connectivity. It protects against downtime by automatically switching to a secondary cellular carrier should the primary SIM lose Internet access. This compact, high-performance device is also compatible with any dual-WAN networking appliance and helps you achieve reliable connectivity at any location using your existing equipment.

Couple the Digi EX12 with a dedicated wireline ISP connection to maximize uptime and ensure reliable network availability

for POS systems, ATMs, mobile kiosks, digital signage and more. Deployments are streamlined with installation accessories including an optional Remote Mounting Kit with a disposable battery pack for site survey, mounting bracket and a passive Power-over-Ethernet (PoE) injector for optimizing placement for the best cellular reception.

Reduce the complexity of deploying and managing devices with **Digi Remote Manager®**, the command center of an intelligent network. At the heart of Digi's cellular solutions, Digi Remote Manager provides centralized control, management, security, edge intelligence and day-to-day network management for hundreds and thousands of distributed devices.

FEATURES AND BENEFITS

- Redundant cellular connectivity with dual SIMs and **Digi SureLink®**
- **Digi TrustFence®** for built-in device security, secure encrypted connections, ongoing monitoring and support
- **FirstNet Capable™** models for use on public safety networks
- Optional Remote Mounting Kit with bracket, accessories, passive PoE injector and site survey battery pack to identify the best location for optimum cellular reception
- Automatic cellular carrier detection and switching with **Carrier Smart Select™**
- **Digi Remote Manager** software for easy setup, mass configuration and management

RELATED PRODUCTS



Digi EX15



Digi 6330-MX



Digi 6310-DX

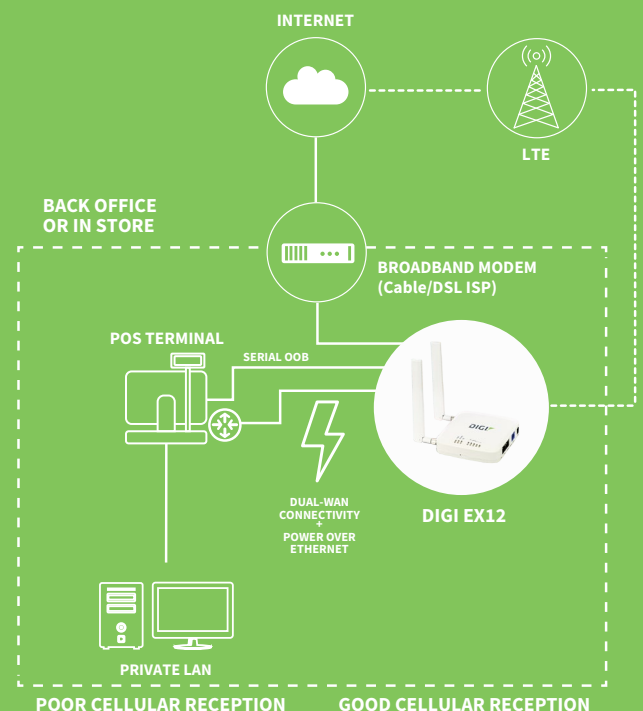


Accessories



Digi Remote Manager

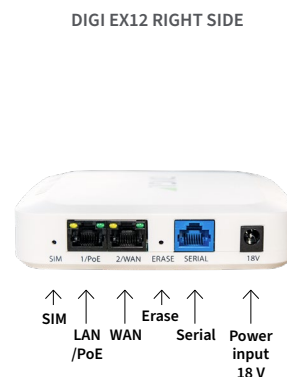
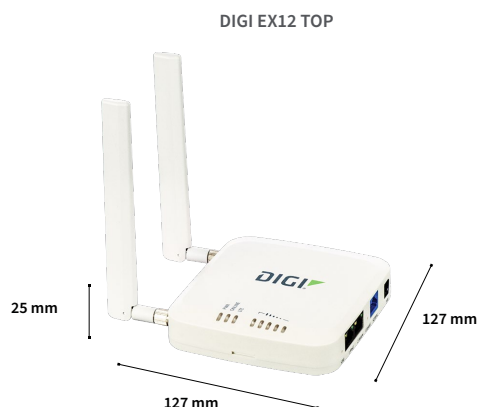
APPLICATION EXAMPLE



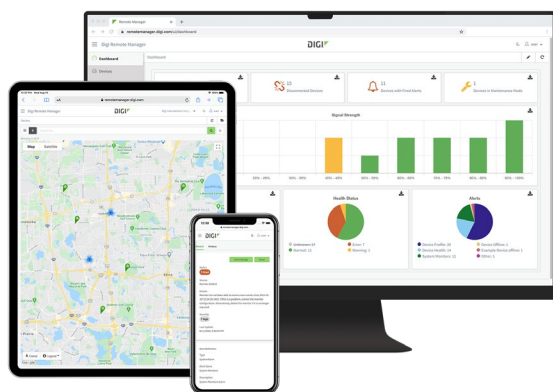
| SPECIFICATIONS | | DIGI EX12 |
|--------------------------------------|---|-----------|
| CELLULAR CONNECTIVITY | | |
| CELLULAR BANDS | LTE: B2, B4, B5, B12, B13, B14 (FirstNet [™]), B66, B71; 3G: B2, B4, B5; Transfer rate (max): 150 Mbps down, 50 Mbps up | |
| CONNECTORS | (2) 50 Ω SMA (center pin: female) | |
| SIM SLOTS | (2) Mini-SIM (2FF); software selectable and hardware switchable | |
| SOFTWARE AND MANAGEMENT | | |
| REMOTE MANAGEMENT | Digi Remote Manager; SNMP v3 (user installed/managed), encrypted SMS | |
| LOCAL MANAGEMENT | WebUI (HTTP/HTTPS); CLI (SSH, serial port) | |
| PROTOCOLS | RIP, RIPng, OSPFv2, OSPFv3, BGP, Babel, IS-IS | |
| MANAGEMENT/ TROUBLESHOOTING TOOLS | FTP client, SCP; protocol analyzer with PCAP for Wireshark; event logging with syslog and SMTP client; NTP/SNTP | |
| MEMORY | 256 MB RAM, 512 MB flash | |
| ETHERNET | | |
| PORTS | (2) RJ-45; 10/100 Mbps (auto-sensing) | |
| SERIAL | | |
| PORTS | (1) RS-232 (RJ-45) | |
| PHYSICAL | | |
| DIMENSIONS (L x W x H) | 127 mm x 127 mm x 25 mm (5.0 in x 5.0 in x 1.0 in) | |
| WEIGHT | 0.24 kg (8.25 oz) | |
| STATUS LEDs | LAN (link = solid, flashing = act), WAN (link = solid, flashing = act), LTE, 5 signal | |
| ENCLOSURE | Plastic | |
| POWER REQUIREMENTS | | |
| POWER INPUT | 18 VDC 1 A | |
| ACCESSORIES | Includes power supply, cables, antennas and optional Remote Mounting Kit: temporary battery, passive PoE injector, mounting bracket and accessories (see part numbers for details); Note: only the Digi-supplied power supply and passive PoE injector are recommended for use with Digi EX12 | |
| ENVIRONMENTAL | | |
| OPERATING TEMPERATURE | 0 °C to 40 °C (32 °F to 104 °F) | |
| RELATIVE HUMIDITY | 5% to 95% (non-condensing) | |
| APPROVALS | | |
| CELLULAR | PTCRB, US: AT&T, FirstNet Capable [™] , T-Mobile, US Cellular, Verizon; Canada; Visit www.digi.com/resources/certifications for latest certifications | |
| PUBLIC SAFETY NETWORKS | FirstNet Trusted [™] | |
| EMISSIONS / IMMUNITY | FCC Part 15, Subpart B, Class B; CE, RCM; CAN ICES-3(B)/NMB-3(B) | |
| WARRANTY | | |
| PRODUCT WARRANTY | 3-year* | |

*Standard 3-year warranty upgradeable to 5 years with purchase of a Digi Remote Manager Premier 5-year subscription applicable to the product purchased only at the time of product purchase and with product registration at that time in Digi Remote Manager.

PRODUCT IMAGES



DIGI REMOTE MANAGER



Digi Remote Manager is the technology platform that brings networks to the next level, allowing networks — and the people who manage them — to work smarter. With Digi Remote Manager you can transform a multitude of dispersed IoT devices into a dynamic, intelligent network. Now you can easily deploy, monitor and diagnose thousands of mission-critical devices from a single point of command — on your desktop, tablet or phone. All the while, its software-defined security diligently safeguards your entire Digi ecosystem.

Learn more at www.digi.com/digi-remote-manager

CAPABILITIES

- Activate, monitor and diagnose your mission-critical devices from a single point of command and control
- Schedule key operations — including firmware updates and file management — on a single device or on a group of devices, keeping your network functionality up-to-date and maintaining compliance standards
- Manage edge devices out-of-band via console terminal access
- Keep tabs on device health and connectivity across device deployments of any size
- Create detailed reports and enable real-time alerts for specified conditions
- Integrate device data through open APIs to gain deeper insights and control with third-party applications
- Report and alert on performance statistics, including connection history, signal quality, latency, data usage and packet loss

INFRASTRUCTURE

- Hosted in a commercial-grade cloud server environment that meets SOC 1*, SOC 2* and SOC 3* standards
- Superior availability, operating to 99.9% or greater
- Open APIs available to support application development

SECURITY

- Comprehensive security controls in place to protect your data
- Member of the Center for Internet Security* (CIS*)
- Enables compliance with security frameworks like ISO27002, HIPAA, NIST and more
- Earned Skyhigh's CloudTrust™ Program highest rating of Enterprise-Ready

| PART NUMBERS | DIGI EX12 |
|---------------|---|
| EX12-R004-OUS | Digi EX12 with Remote Mounting Kit — 2-port 10/100; RJ-45, RS-232; US and Canada, LTE / HSPA+ Cat 4; FirstNet Capable™ Includes antennas, power supply, site survey battery, PoE injector and mounting accessories |
| EX12-0004-OUS | Digi EX12 without Remote Mounting Kit — 2-port 10/100; RJ-45, RS-232; US and Canada, LTE / HSPA+ Cat 4; FirstNet Capable™ Includes antennas and power supply |

| PART NUMBERS | ACCESSORIES |
|--------------|---|
| 76002112 | 18 V PSU power supply with barrel jack connector (replacement) |
| 500170 | 10/100 base-T passive PoE adapter, green (replacement) |
| 440084 | 4 meter flat Cat 6 Ethernet cable, white (replacement) |
| 440091 | 0.5 meter flat Cat 6 Ethernet cable, white (replacement) |
| 560083 | Temporary site survey battery pack, 9 V with 152.4 mm power lead, 2.1 mm barrel connector (replacement) |

| PART NUMBERS | DIGI REMOTE MANAGER |
|-----------------|---|
| DIGI-RM-PRM-1YR | Digi Remote Manager Premier — 1-year subscription |
| DIGI-RM-PRM-3YR | Digi Remote Manager Premier — 3-year subscription |
| DIGI-RM-PRM-5YR | Digi Remote Manager Premier — 5-year subscription |

FOR MORE INFORMATION
PLEASE VISIT **DIGI.COM**

FirstNet® and FirstNet Capable™ are registered trademarks and service marks of the First Responder Network Authority.

DIGI SERVICE AND SUPPORT / You can purchase with confidence knowing that Digi is always available to serve you with expert technical support and our industry leading warranty. For detailed information visit www.digi.com/support.

© 2023 Digi International Inc. All rights reserved.
All trademarks are the property of their respective owners.

91004418
C4/1123

DIGI INTERNATIONAL WORLDWIDE HQ
877-912-3444 / 952-912-3444 / www.digi.com

DIGI INTERNATIONAL JAPAN
+81-3-5428-0261 / www.digi-intl.co.jp

DIGI INTERNATIONAL GERMANY
+49-89-540-428-0

DIGI INTERNATIONAL SINGAPORE
+65-6213-5380

DIGI INTERNATIONAL CHINA
+86-21-50492199 / www.digi.com.cn

