



Manage this device with  
Digi Remote Manager



# DIGI IX10

Rugged, reliable, cost-effective connectivity for critical industrial applications

Digi IX10 is a full-featured cellular router built for trouble-free reliability over a long service life. Its flexible power and connectivity options make it a versatile and cost-effective choice for industrial, digital signage, ATMs, lottery terminals, kiosks and other unattended retail applications that need to provide secure transactions over public and private cellular networks.

Digi IX10 can operate on public and private LTE networks, with features to assist in network control and management, such as dual SIMs for cellular failover connectivity, VLAN support, load balancing between cellular and Ethernet WANs, dual APNs and configurable APN search. In the event of an interruption to your primary network connection, Digi RM provides secure out-of-band management of edge devices via Digi IX10's serial port and command-line interface.

Digi IX10 also features one Ethernet port and one RJ-45 serial port supporting both RS-232 and RS-485.

Gain critical insights into your deployed devices and manage your network with **Digi Remote Manager®** (Digi RM) — the command center for your deployment. Digi RM is a cloud-based solution that facilitates easy setup, mass configuration, maintenance and support, even for thousands of devices. Digi RM empowers you to evaluate, update and configure your Digi products, while providing easy visibility into the health of your network. It also offers low-touch and no-touch provisioning.

Digi IX10 offers the convenience of a global SKU for simplified global distribution and deployment, as well as cost-optimized SKUs for North America, including a CBRS-only and an Anterix-only SKU.

## FEATURES AND BENEFITS

- Compact and economical connectivity solution with industrial feature set for public and private cellular networks
- Redundant connectivity with dual SIMs and **Digi SureLink®**
- Global and regional bands with single part number to simplify distribution, deployment and management
- Built-in **Digi TrustFence®** for device security, device identity and data privacy
- **Digi Remote Manager** platform for easy setup, mass configuration and out-of-band management
- Ethernet port and single RJ-45 serial port (RS-232/485)

## RELATED PRODUCTS



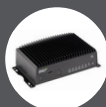
Digi IX20



Digi IX30



Digi TX40

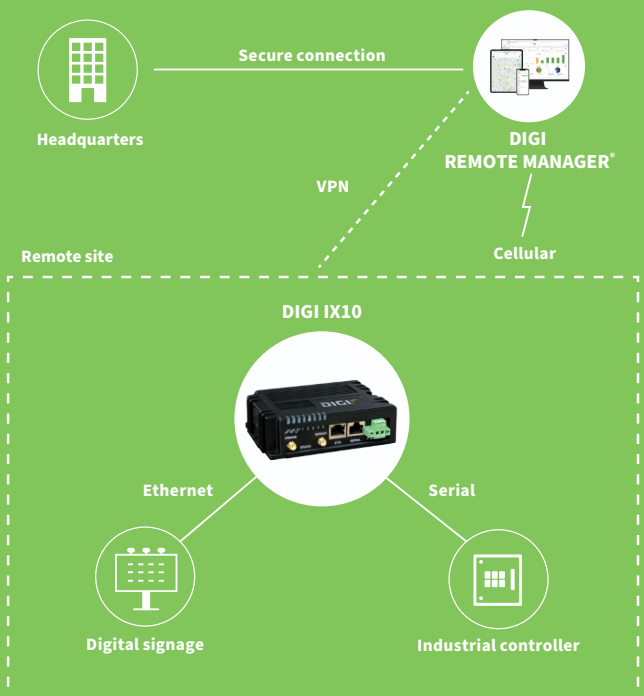


Digi TX54



Digi Remote Manager®

## APPLICATION EXAMPLE

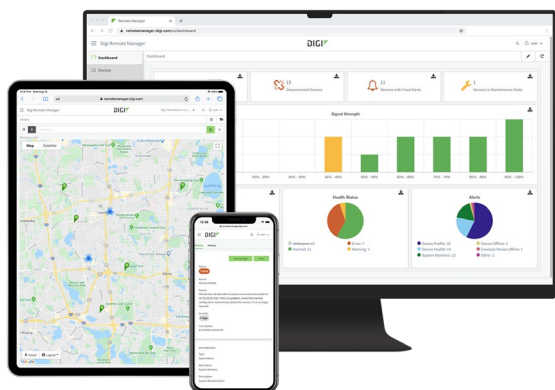


SPECIFICATIONS		DIGI IX10	
CELLULAR			
CERTIFICATIONS		Visit <a href="http://www.digi.com/resources/certifications">www.digi.com/resources/certifications</a> for latest certifications	
LTE CAT 4 GLOBAL (G4)		LTE Cat 4 Global: B1, B2, B3, B4, B5, B7, B8, B12, B13, B18, B19, B20, B25, B26, B28, B38, B39, B40, B41; 3G: B1, B2, B4, B5, B6, B8, B19; 2G EDGE / GPRS: 850 / 900 / 1800 / 1900 MHz	
LTE CAT 4 REGIONAL — NORTH AMERICA (N4)		LTE Cat 4 Regional — North America: B2, B4, B5, B12, B13, B14, B66, B71; 3G: B2, B4, B5	
LTE-ADVANCED CAT 6 CBRS-ONLY — NORTH AMERICA (C6)		LTE-Advanced Cat 6 CBRS-only — North America: B42, B43, B48 (CBRS)	
LTE CAT-M1 ANTERIX-ONLY — NORTH AMERICA (M1)		LTE Cat-M1 Anterix-only — North America: B8 (Anterix)	
SIM SLOTS		IX10-00N4, IX10-00G4, IX10-00C6: (2) Mini-SIM (2FF) IX10-00M1: (2) Nano-SIM (4FF)	
SIM SECURITY		Behind SIM cover, secured with screw (#1 Phillips)	
SOFTWARE AND MANAGEMENT			
REMOTE MANAGEMENT		Digi Remote Manager; SNMP v2/v3 (user installed/managed)	
LOCAL MANAGEMENT		WebUI (HTTP/HTTPS); CLI (SSH)	
MANAGEMENT/ TROUBLESHOOTING TOOLS		FTP client, SCP; protocol analyzer with PCAP for Wireshark; event logging with syslog and SMTP client; NTP/SNTP; Nagios, Intelliflow, iPerf, Dynamic DNS, ping, traceroute	
MEMORY		256 MB RAM, 256 MB flash	
ETHERNET			
PORTS		(1) RJ-45; 10/100 Mbps (auto-sensing)	
SERIAL			
PORTS		(1) RJ-45 10-pin (10P10C); RS-232/485; software selectable - RS-232 DTE (RXD, TXD, RTS, CTS, DTR, DCD, DSR, RI) - RS-485 (TX/RX+; RX/TX-); half-duplex	
PHYSICAL			
DIMENSIONS (L x W x H)		118 mm x 88 mm x 35 mm (4.65 in x 3.46 in x 1.38 in)	
WEIGHT		0.39 kg (0.86 lb)	
STATUS LEDs		Power, Internet, SIM 1, SIM 2, SIM fail, LTE, signal strength (5)	
ENCLOSURE		Glass-filled polyphenylene sulphide (PPS) / IP30	
POWER REQUIREMENTS			
POWER INPUT		9 - 30 VDC, 1.0 A maximum	
POWER CONSUMPTION		Configurable low-power modes; 1.5 W (light traffic flow), 2.5 W (peak data transmission); 1.25 W (low power mode, idle traffic)	
ACCESSORIES			
AVAILABLE ACCESSORIES		Accessories not included. Available accessories: industrial extended temperature or commercial power supply (required), and cellular antennas, DIN rail clip and EIA 422/485 to RJ-45 connector (recommended / optional)	
ENVIRONMENTAL			
OPERATING TEMPERATURE		-40 °C to 70 °C (-40 °F to 158 °F); device performance may be impacted above 50 °C (122 °F)	
STORAGE TEMPERATURE		-40 °C to 85 °C (-40 °F to 185 °F)	
RELATIVE HUMIDITY		5% to 95% (non-condensing)	
APPROVALS			
CELLULAR		Visit <a href="http://www.digi.com/resources/certifications">www.digi.com/resources/certifications</a> for latest cellular certifications	
SAFETY		IEC 62368-1, CB, EN6 2311	
ENVIRONMENTAL		ROHS3	
EMISSIONS / IMMUNITY		CE; RED; FCC Part 15, Subpart B; ICES-003; AU/NZS CISPR32	
WARRANTY			
PRODUCT WARRANTY		3-year*	

\*Standard 3-year warranty upgradeable to 5 years with purchase of a Digi Remote Manager Premier 5-year subscription applicable to the product purchased only at the time of product purchase and with product registration at that time in Digi Remote Manager.

ENTERPRISE SOFTWARE	DESCRIPTION
CELLULAR CONNECTIVITY	
PROTOCOL SUPPORT	HTTPS, FTP client, TLS v1.2, SCP (client and server), SFTP, SMTP client for use by scripts and the command line, SNMP (v2/v3), SSH; remote management via <a href="#">Digi Remote Manager</a> ; protocol analyzer, ability to capture PCAP for use with Wireshark; DynDNS; dynamic DNS client compatible with BIND9/No-IP/DynDNS; captive portal, Intelliflow; Nagios, DNS server, NTP server, multicast, mDNS, IPerf
SECURITY	IP filtering, stateful firewall, custom firewall rules (iptables), address and port translation; TLS 1.2 and above, OpenVPN client and server; VPN tunnels; Authentication: RADIUS, TACACS+; certificates; MAC address filtering; VLAN support
VPN	IPSec with IKEv1, IKEv2, NAT Traversal; OpenVPN client and server; GRE VPN tunnels; Cryptology: SHA-1/256/384/512, MD5, RSA; Encryption: 3DES and AES up to 256-bit (CBC mode for IPsec); Diffie Hellman: DH groups 1-32 (CURVE448)
ROUTING / FAILOVER	IP pass-through; NAT, NAPT with IP port forwarding; GRE; multicast routing; Routing protocols: RIP (v1, v2) OSPF, BGP; IP failover: VRRP; automatic failover, <a href="#">Digi SureLink</a>
OTHER PROTOCOLS	DHCP; dynamic DNS client compatible with No-IP/DynDNS

## DIGI REMOTE MANAGER



[Digi Remote Manager](#) is the technology platform that brings networks to the next level, allowing networks — and the people who manage them — to work smarter. With Digi Remote Manager you can transform a multitude of dispersed IoT devices into a dynamic, intelligent network. Now you can easily deploy, monitor and diagnose thousands of mission-critical devices from a single point of command — on your desktop, tablet or phone. All the while, its software-defined security diligently safeguards your entire Digi ecosystem.

Learn more at [www.digi.com/digi-remote-manager](http://www.digi.com/digi-remote-manager)

### CAPABILITIES

- Activate, monitor and diagnose your mission-critical devices from a single point of command and control
- Schedule key operations — including firmware updates and file management — on a single device or on a group of devices, keeping your network functionality up-to-date and maintaining compliance standards
- Manage edge devices out-of-band via console terminal access
- Keep tabs on device health and connectivity across device deployments of any size
- Create detailed reports and enable real-time alerts for specified conditions
- Integrate device data through open APIs to gain deeper insights and control with third-party applications
- Report and alert on performance statistics, including connection history, signal quality, latency, data usage and packet loss

### INFRASTRUCTURE

- Hosted in a commercial-grade cloud server environment that meets SOC 1<sup>st</sup>, SOC 2<sup>nd</sup> and SOC 3<sup>rd</sup> standards
- Superior availability, operating to 99.9% or greater
- Open APIs available to support application development

### SECURITY

- More than 175 security controls in place to protect your data
- Member of the Center for Internet Security<sup>®</sup> (CIS<sup>®</sup>)
- Enables compliance with security frameworks like ISO27002, HIPAA, NIST and more
- Earned Skyhigh's CloudTrust<sup>™</sup> Program highest rating of Enterprise-Ready

PART NUMBERS	DIGI REMOTE MANAGER
DIGI-RM-PRM-1YR	Digi Remote Manager Premier — 1-year subscription
DIGI-RM-PRM-3YR	Digi Remote Manager Premier — 3-year subscription
DIGI-RM-PRM-5YR	Digi Remote Manager Premier — 5-year subscription

PRODUCT IMAGES

FRONT\*



BACK



\*Digi IX10-00M1 includes a single RF antenna.

PART NUMBERS	DIGI IX10
DIGI IX10 MODELS	
IX10-00G4	Digi IX10 — LTE Cat 4 Global, Ethernet, RS-232/485
IX10-00N4	Digi IX10 — LTE Cat 4 Regional (North America), Ethernet, RS-232/485
IX10-00C6	Digi IX10 — LTE-Advanced Cat 6 CBRS-only (North America), Ethernet, RS-232/485
IX10-00M1	Digi IX10 — LTE Cat-M1 Anterix-only (North America), Ethernet, RS-232/485

PART NUMBERS	AVAILABLE ACCESSORIES*
REQUIRED ACCESSORIES (INDUSTRIAL OR COMMERCIAL POWER SUPPLY)	
76002104	Industrial extended temperature power supply with plug tips for US, UK, EU, AU; -20 °C to 70 °C (-4 °F to 158 °F)
76002117	Commercial temperature power supply with plug tips for US, UK, EU, AU; 0 °C to 40 °C (32 °F to 104 °F)
RECOMMENDED AND OPTIONAL ACCESSORIES	
76002103	(1) Cellular antenna, order quantity 2
76002095	DIN rail clip kit
76000723	Connect EIA 422/485 devices to Digi products that have 10-pin RJ-45 connectors**

\*Accessories not included with IX10 models unless otherwise noted.  
\*\*For RS-232 cabling pinouts and recommended cables, please refer to the Digi products cabling guide at: [www.digi.com/resources/documentation/Digidocs/PDFs/90000253.pdf](http://www.digi.com/resources/documentation/Digidocs/PDFs/90000253.pdf)

FOR MORE INFORMATION  
PLEASE VISIT **DIGI.COM**