



REMOTE MANAGED
CONSOLE
ACCESS SERVER



Manage this device with
Digi Remote Manager



DIGI CONNECT IT MINI

Secure, affordable, managed out-of-band access for isolated remote IT devices

Digi Connect® IT Mini is a full function IoT router and remote console access server that ensures continuous network uptime to remote locations. It provides a cost-effective, always-on, out-of-band gateway for branch office routers in locations like retail stores, kiosks or other sites. Connect IT Mini enables backup connectivity to manage and correct issues with isolated, critical IT infrastructure.

For enterprises that need serial access for remote equipment monitoring, Digi Connect IT Mini offers a complete and secure cellular-based solution in the industry for less than the cost of an enterprise modem. Using **Digi Remote Manager®** (Digi RM) and Connect IT Mini, network administrators can identify and remediate issues at the network edge before they can become a work order or cause a network interruption.

Digi TrustFence®, a suite of hardware and security features, ensures the integrity of Digi Connect IT Mini and safeguards out-of-band access to isolated infrastructure. To secure your connections, built-in features include authenticated boot, encrypted data storage, access-controlled ports, and secure software updates.

Digi RM and Digi Connect IT Mini provide easy setup, configuration, security management and serial port monitoring of large installations of remote Digi devices. Digi RM offers web-based device management for any Digi cellular routers, gateways or third-party devices with a single-pane-of-glass view to monitor and access Digi Connect IT console access servers and the critical IT assets to which they are connected.

FEATURES AND BENEFITS

- IoT router with LTE Cat-M/NB-IoT/2G for maximum coverage
- Out-of-band (OOB) management and recovery using secure SMS, advanced modem management software, and early detection and remediation of issues
- Operates independently from in-band network
- Identify any unusual activity or attempts to access the remote device, and send automated alerts via email or SMS to notify of any network issues
- 5 V power enables host USB to power unit and eliminate power supply
- **Digi Remote Manager** platform for easy setup, mass configuration and management

RELATED PRODUCTS



Digi
Connect® IT 4



Digi
Connect® IT 16/48



Digi
6310-DX

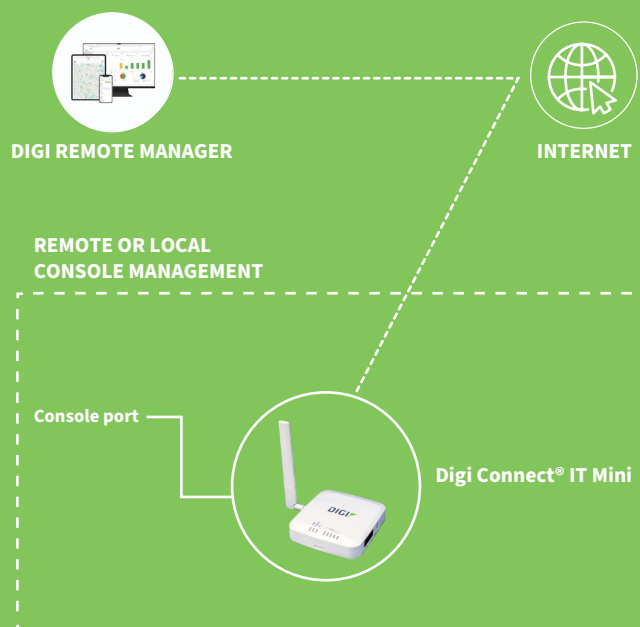


Digi
ConnectPort® TS



Digi Remote
Manager®

APPLICATION EXAMPLE



SPECIFICATIONS	DIGI CONNECT® IT MINI
CELLULAR	LTE Cat-M/NB-IoT/2G; LTE bands B1, B2, B3, B4, B5, B8, B12, B13, B18, B19, B20, B26, B28; 2G bands: B2, B3, B5, B8
MODULE SUPPORT	Global LTE Cat-M/NB-IoT/2G
SOFTWARE AND MANAGEMENT	
REMOTE MANAGEMENT	Digi Remote Manager® (cloud-based)
LOCAL MANAGEMENT	WebUI (HTTP/HTTPS); CLI (console, SSH)
NETWORK	
ETHERNET	RJ-45; 10/100 Mbps (auto-sensing)
CONNECTIONS	
SERIAL/USB	Serial port RJ-45 RS-232 and USB 2.0 host port
PHYSICAL	
DIMENSIONS (L x W x H)	127 mm x 127 mm x 25 mm (5.0 in x 5.0 in x 1.0 in)
WEIGHT	0.37 kg (13 oz)
STATUS LEDS	Power, online, LTE, (5) signal strength
POWER REQUIREMENTS	
POWER INPUT	5.0 VDC, 1 A; 100-240 VAC
ENVIRONMENTAL	
OPERATING TEMPERATURE	0 °C to 40 °C (32 °F to 104 °F)
RELATIVE HUMIDITY	5% to 95% (non-condensing)
APPROVALS	
SAFETY, ENVIROMENTAL, EMISSIONS/IMMUNITY	FCC Part 15, Subpart B, Class A; CE, RCM; CAN ICES03(B)/NMB-3(B)
WARRANTY	
PRODUCT WARRANTY	3-year

ENTERPRISE SOFTWARE	DESCRIPTION
PROTOCOL SUPPORT	HTTP, HTTPS, FTP, SFTP, SSL, SNMP v3, SSH and CLI for web management; remote management via Digi Remote Manager®; SMS management
SECURITY/VPN	IP filtering, stateful inspection firewall with scripting, address and port translation; VPN: IPSec with IKEv1, IKEv2, NAT Traversal; SSL, SSLv2, SSLv3; IPSec & OpenVPN tunnels; Cryptology: SHA-1, SHA-2, MD5, RSA; Encryption: DES, 3DES and AES up to 256-bit (CBC mode for IPSec); Authentication: RADIUS, TACACS+, MAC address filtering; VLAN support
ROUTING/FAILOVER	IP pass-through; NAT, NAPT with IP port forwarding; Ethernet bridging; GRE; multicast routing; Routing protocols: PPP, OSPF, BGP, RSTP (Rapid Spanning Tree Protocol); IP failover: VRRP, automatic failover/failback to secondary connection
OTHER PROTOCOLS	QoS via TOS/DSCP/WRED; UDP/TCP to serial

PRODUCT IMAGES

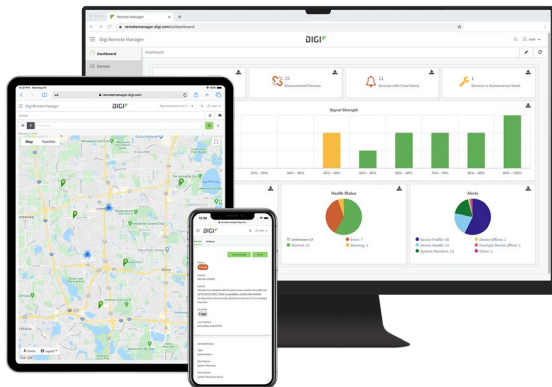
DIGI CONNECT® IT MINI LEFT



DIGI CONNECT® IT MINI RIGHT



DIGI REMOTE MANAGER®



Digi Remote Manager is the technology platform that brings networks to the next level, allowing networks — and the people who manage them — to work smarter. With Digi Remote Manager you can transform a multitude of dispersed IoT devices into a dynamic, intelligent network. Now you can easily deploy, monitor and diagnose thousands of mission-critical devices from a single point of command — on your desktop, tablet or phone. All the while, its software-defined security diligently safeguards your entire Digi ecosystem.

Learn more at www.digi.com/digi-remote-manager

CAPABILITIES

- Activate, monitor and diagnose your mission-critical devices from a single point of command and control
- Schedule key operations — including firmware updates and file management — on a single device or on a group of devices, keeping your network functionality up-to-date and maintaining compliance standards
- Manage edge devices out-of-band via console terminal access
- Keep tabs on device health and connectivity across device deployments of any size
- Create detailed reports and enable real-time alerts for specified conditions
- Integrate device data through open APIs to gain deeper insights and control with third-party applications
- Report and alert on performance statistics, including connection history, signal quality, latency, data usage and packet loss

INFRASTRUCTURE

- Hosted in a commercial-grade cloud server environment that meets SOC 1[®], SOC 2[®] and SOC 3[®] standards
- Superior availability, operating to 99.9% or greater
- Open APIs available to support application development

SECURITY

- Comprehensive security controls in place to protect your data
- Member of the Center for Internet Security[®] (CIS[®])
- Enables compliance with security frameworks like ISO27002, HIPAA, NIST and more
- Earned Skyhigh's CloudTrust[™] Program highest rating of Enterprise-Ready

VALUE-ADDED SERVICES: DIGI CONTAINERS



DIGI REMOTE MANAGER ENABLES DEPLOYMENT OF CUSTOM APPLICATIONS VIA CONTAINERS

Digi Containers simplify and centralize the process of building, deploying and running custom applications on devices managed with **Digi Remote Manager** as the central portal. Containers with custom programs or Python applications can be loaded via Digi RM on any device running the **Digi Accelerated Linux** operating system (DAL OS).

As an add-on service to Digi Remote Manager, Digi Containers are a powerful capability implemented via Lightweight Linux Containers (LXC). LXC tools enable developers to package up a custom application, with its dependencies and configuration, into a lightweight, portable bundle that shares only the running kernel with the host device.

*Digi Containers is available as a subscription added to Digi Remote Manager Premier.

PART NUMBERS	DIGI CONNECT® IT MINI
IT01-M100-GLB	Digi Connect IT Mini remote console access server

PART NUMBERS	ACCESSORIES
170012	(1) Cellular antenna (black) for use with Digi products that have LTE modems - replacement
76000670	Digi DB-25 male modem adapter (8-pack)
76000671	Digi DB-9 female console adapter (8-pack)
76000672	Digi DB-25 male console adapter (8-pack)
76000673	Digi DB-25 female console adapter (8-pack)
76000702	Digi DB-9 male modem adapter (8-pack)

PART NUMBERS	DIGI REMOTE MANAGER® AND VALUE-ADDED SERVICES
DIGI REMOTE MANAGER SUBSCRIPTIONS	
DIGI-RM-STD-1YR	Digi Remote Manager Standard — 1-year subscription
DIGI-RM-PRM-1YR	Digi Remote Manager Premier — 1-year subscription
DIGI-RM-PRM-3YR	Digi Remote Manager Premier — 3-year subscription
DIGI-RM-PRM-5YR	Digi Remote Manager Premier — 5-year subscription
VALUE-ADDED SUBSCRIPTIONS	
DIGI-RM-PRM-CS	Digi Containers subscription

For more information, please visit digi.com.

DIGI SERVICE AND SUPPORT / You can purchase with confidence knowing that Digi is always available to serve you with expert technical support and our industry leading warranty. For detailed information visit www.digi.com/support.

© 2023 Digi International Inc. All rights reserved.
All trademarks are the property of their respective owners.

91004398
C5/923

DIGI INTERNATIONAL WORLDWIDE HQ
877-912-3444 / 952-912-3444 / www.digi.com

DIGI INTERNATIONAL JAPAN
+81-3-5428-0261 / www.digi-intl.co.jp

DIGI INTERNATIONAL GERMANY
+49-89-540-428-0

DIGI INTERNATIONAL SINGAPORE
+65-6213-5380

DIGI INTERNATIONAL CHINA
+86-21-50492199 / www.digi.com.cn

