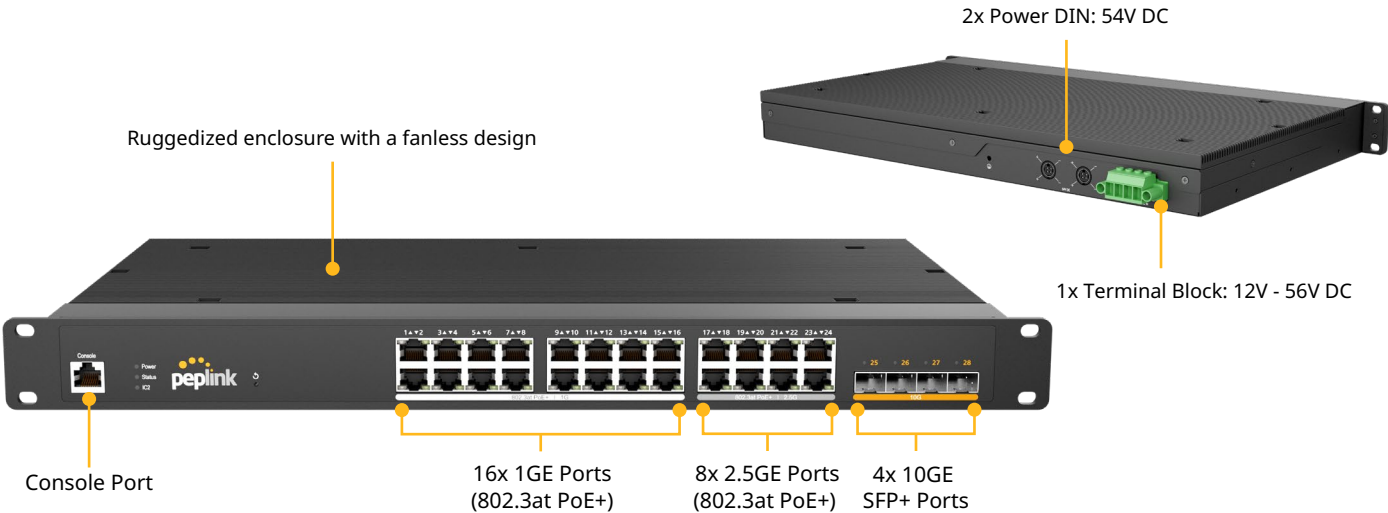
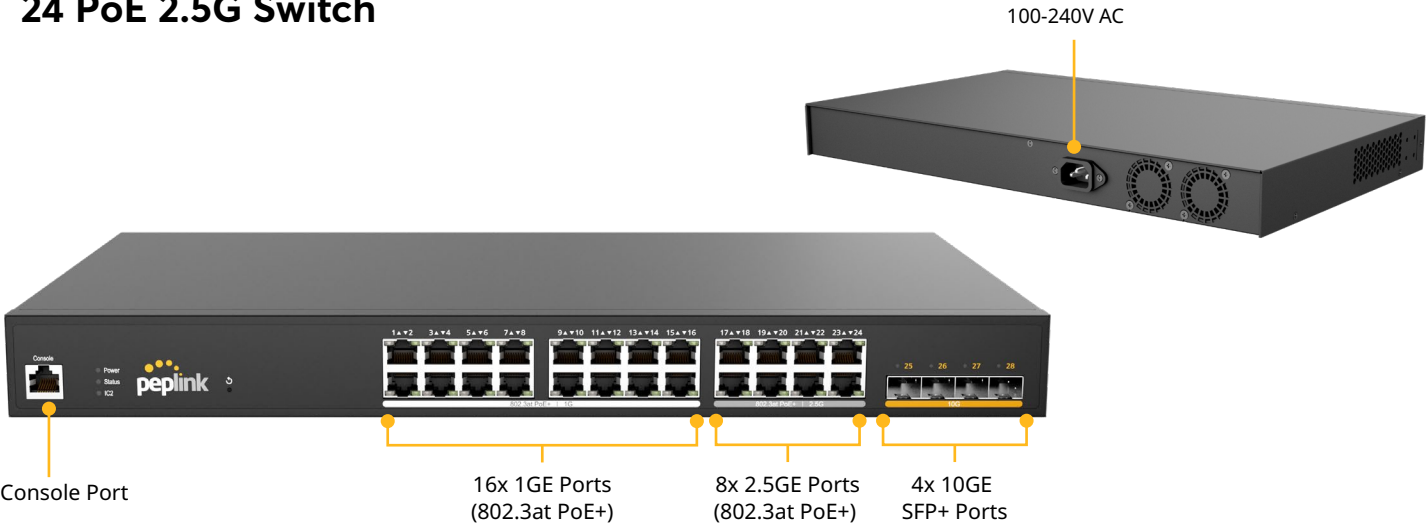


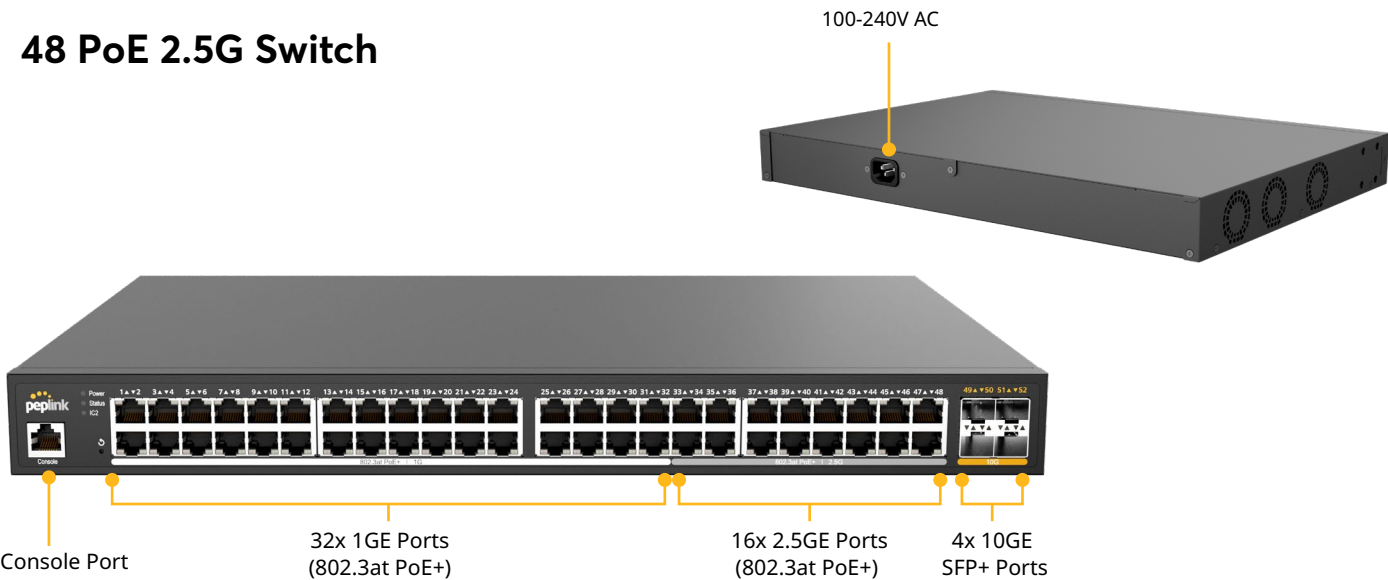
24 PoE 2.5G Switch Rugged



24 PoE 2.5G Switch



48 PoE 2.5G Switch



24 PoE 2.5G
Switch Rugged



24 PoE 2.5G
Switch



48 PoE 2.5G
Switch



Specifications

Interface			
• RJ45	16x 1GE 802.3at PoE+ 8x 2.5GE 802.3at PoE+	16x 1GE 802.3at PoE+ 8x 2.5GE 802.3at PoE+	16x 1GE 802.3at PoE+ 8x 2.5GE 802.3at PoE+
• SFP+	4x 10GE	4x 10GE	4x 10GE
Switch Capacity	152 Gbps	152 Gbps	224 Gbps
Max. Packet Forwarding Rate	216 Mpps	216 Mpps	318 Mpps
MAC Address Table	16,000	16,000	32,000
Power Supply	1x External PSU (180W) ¹ <ul style="list-style-type: none">AC Input: 100-240V, 2.3ADC Output: 54V, 3.34A	1x Internal PSU (480W)	1x Internal PSU (900W)
Power Input	2x Power DIN: 54V DC 1x Terminal Block: 12V - 56V DC	1x 100V – 240V AC	1x 100V – 240V AC
Power Consumption	38W (System)	38W (System)	64W (System)
Total PoE Power Budget	250W	410W	740W
Dimensions (D x W x H)	10.5 x 19.1 x 1.8 inches 265 x 485 x 45mm	10.3 x 17.3 x 1.8 inches 260 x 440 x 45 mm	12.2 x 17.3 x 1.8 inches 310 x 440 x 45 mm
Weight	TBC	9.0 pounds / 4.1 kg	10.8 pounds / 4.9 kg
Operating Temperature	-40° – 149°F / -40° – 65°C	32° – 122°F / 0° – 50°C	32° – 122°F / 0° – 50°C
Humidity	15% - 95% (non-condensing)	15% – 95% (non-condensing)	15% – 95% (non-condensing)
Certification ²	FCC, CE, RoHS, IC, UL	FCC, CE, RoHS, IC, UL	FCC, CE, RoHS, IC, UL
Warranty	1-Year Limited Warranty	1-Year Limited Warranty	1-Year Limited Warranty

¹ In the case where a power budget of 250W is required, an additional 180W external PSU (ACW-630) must be connected, as the bundled PSU only provides a PoE power budget of 140W.
² Certification Pending

Specifications are subject to change without notice.

Ordering Information

Product Code

Description

PLS-R-24-H2G-250W

24 PoE 2.5G Switch Rugged

- Ruggedized Enclosure with with a fanless design for industrial environments.
- 16x 1GE (802.3at PoE+) RJ45 ports
- 8x 2.5GE (802.3at PoE+) RJ45 ports
- 4x 10GE SFP+ ports
- 250W PoE power budget

PLS-24-H2G-410W

24 PoE 2.5G Switch

- 16x 1GE (802.3at PoE+) RJ45 ports
- 8x 2.5GE (802.3at PoE+) RJ45 ports
- 4x 10GE SFP+ ports
- 410W PoE power budget

PLS-48-H2G-740W

48 PoE 2.5G Switch

- 32x 1GE (802.3at PoE+) RJ45 ports
- 16x 2.5GE (802.3at PoE+) RJ45 ports
- 4x 10GE SFP+ ports
- 740W PoE power budget

Featured Add-on

Product Code

Description

PRM-A-1Y / PCP-A-1Y
PRM-A-2Y / PCP-A-2Y
PRM-A-4Y / PCP-A-4Y

PrimeCare A / PrimeCare+ A (1-Year)
PrimeCare A / PrimeCare+ A (2-Year)
PrimeCare A / PrimeCare+ A (4-Year)

- Available for 24 PoE 2.5G Switch

PRM-B-1Y / PCP-B-1Y
PRM-B-2Y / PCP-B-2Y
PRM-B-4Y / PCP-B-4Y

PrimeCare B / PrimeCare+ B (1-Year)
PrimeCare B / PrimeCare+ B (2-Year)
PrimeCare B / PrimeCare+ B (4-Year)

- Available for 48 PoE 2.5G Switch

ACW-630

PSU for 24 PoE 2.5G Switch Rugged